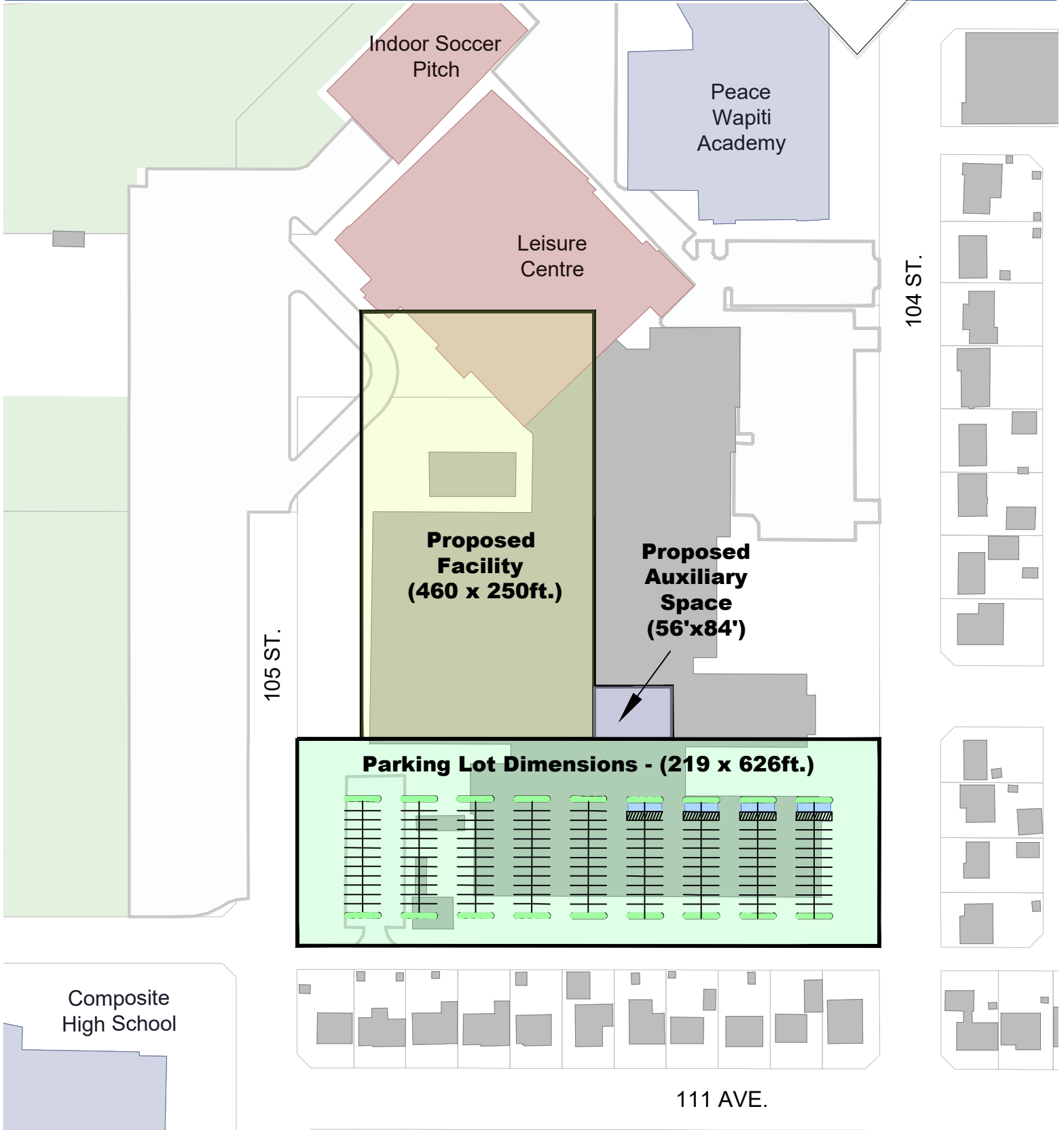




Proposed Recreation Facility Avondale Option 1



Site Information

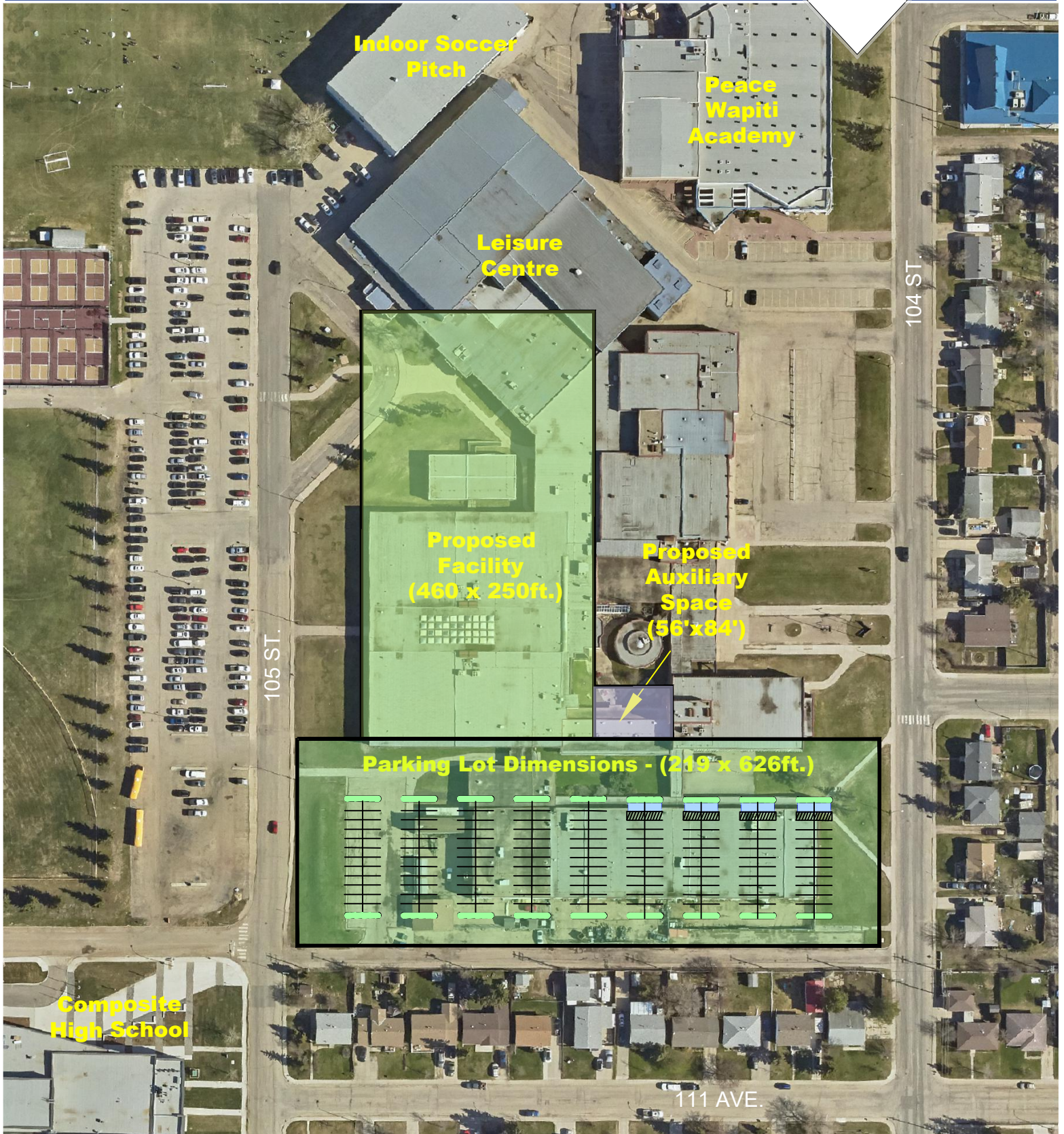
- Building Size = 115 000 Sq ft.
- Auxiliary Building Size = 4704 Sq ft.
- Parking Lot Size = 137 094 Sq ft.
- Proposed 208 Stalls including 8 Disabled Stalls

Notes:

- Stall sizing is 5.9 x 3.05m
- Main Drive Isle is 9.3m wide
- Parking Isle is 6.7m wide.



Proposed Recreation Facility Avondale Option 1



Site Information

- Building Size = 115 000 Sq ft.
- Auxiliary Building Size = 4704 Sq ft.
- Parking Lot Size = 137 094 Sq ft.
- Proposed 208 Stalls including 8 Disabled Stalls

Notes:

- Stall sizing is 5.9 x 3.05m
- Main Drive Isle is 9.3m wide
- Parking Isle is 6.7m wide.

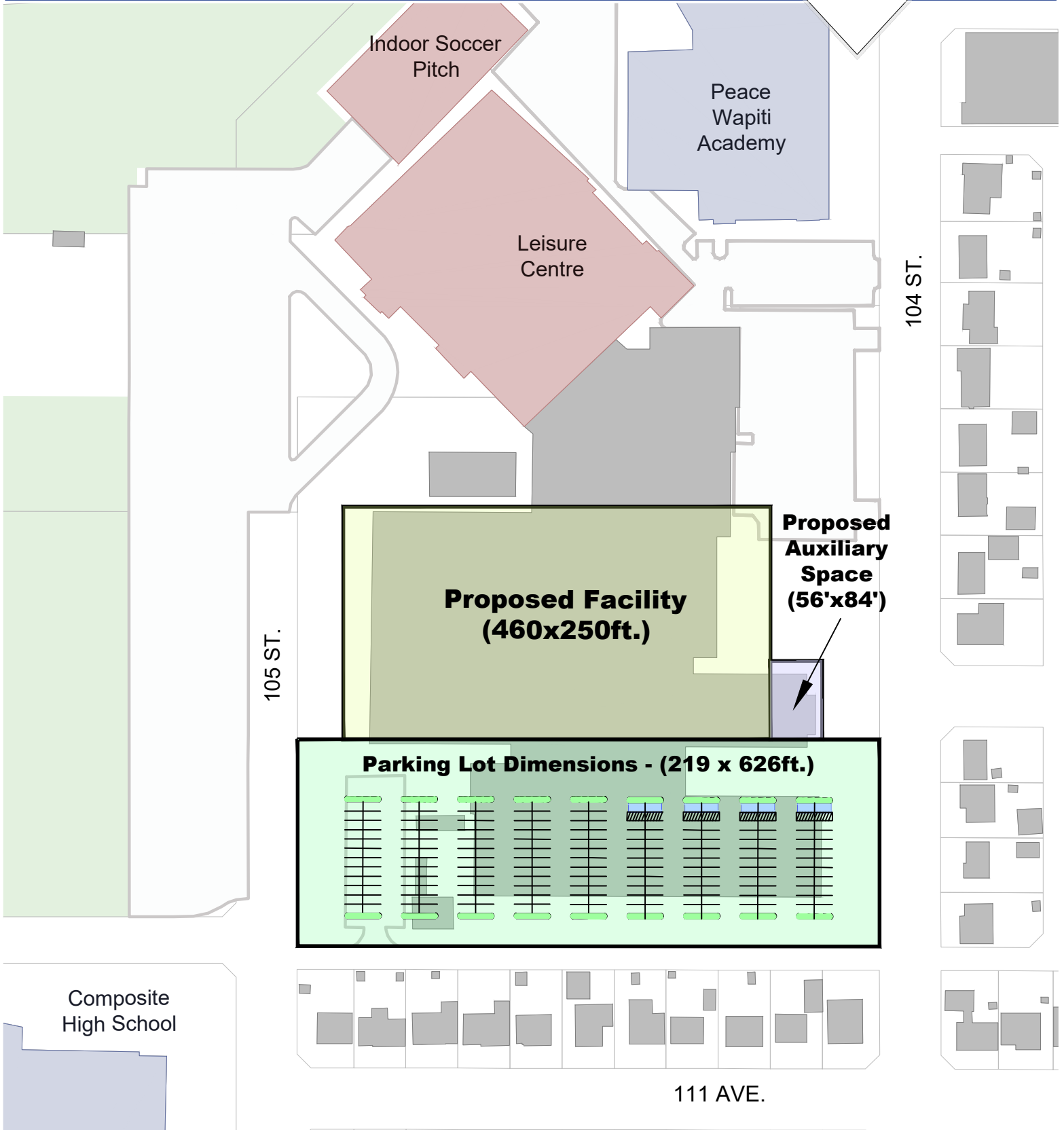
The revision date shown applies only to content of this map as indicated by the title.

This map was prepared by the
GIS & ITS Department,
City of Grande Prairie, Alberta.
Contact the GIS & ITS Department at:
gpgis@citygpp.com
<https://map.gpgis.com>

Scale: N.T.S.
Date: 23/09/05
File No.: C23112



Proposed Recreation Facility Avondale Option 2



Site Information

- Building Size = 115 000 Sq. ft.
- Auxiliary Building Size = 4704 Sq. ft.
- Parking Lot Size = 137 094 Sq. ft.
- Proposed 208 Stalls including 8 Disabled Stalls

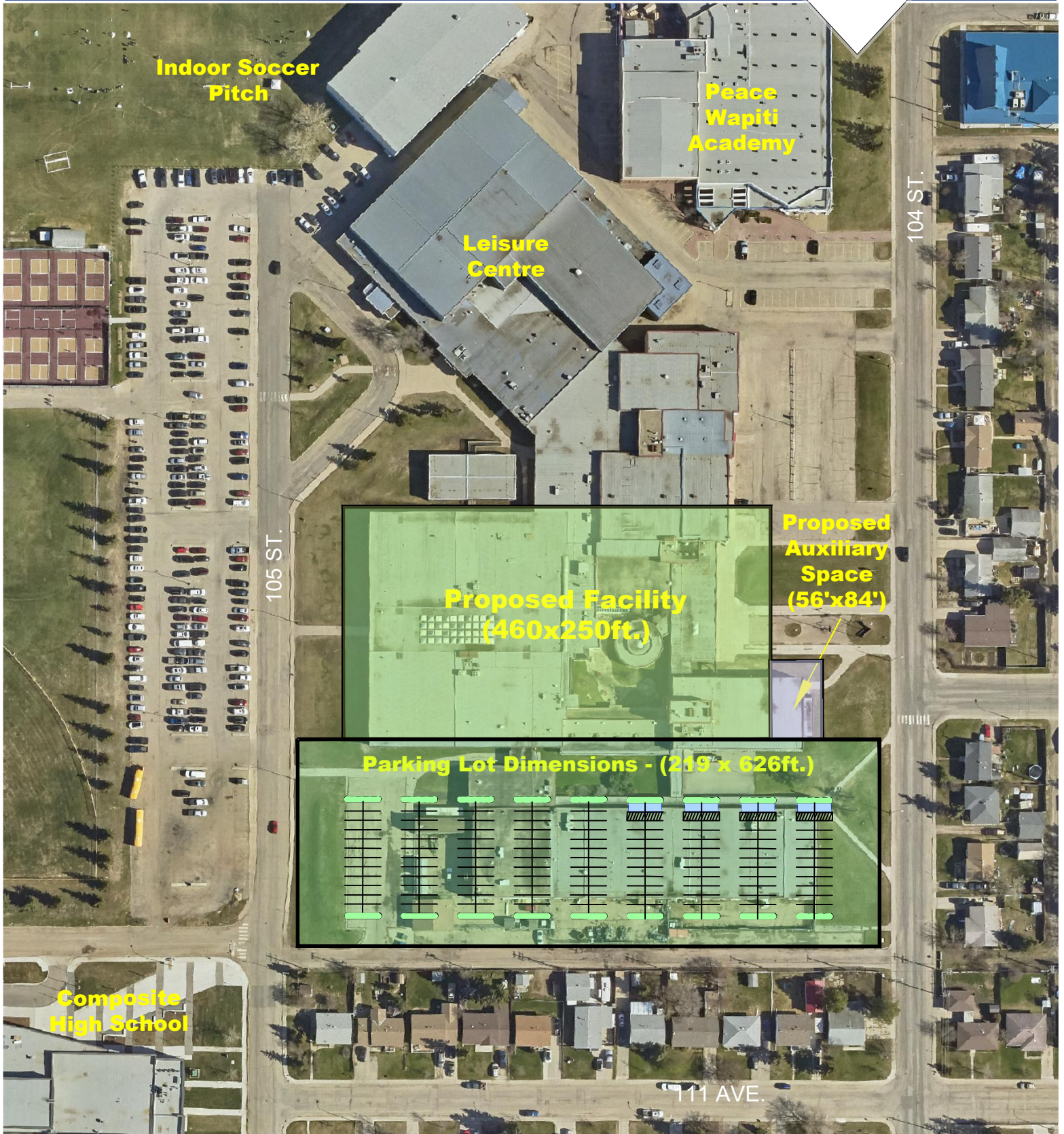
Notes:

- Stall sizing is 5.9 x 3.05m
- Main Drive Isle is 9.3m wide
- Parking Isle is 6.7m wide.

The revision date shown applies only to content of this map as indicated by the title.



Proposed Recreation Facility Avondale Option 2



Site Information

- Building Size = 115 000 Sq ft.
- Auxiliary Building Size = 4704 Sq ft.
- Parking Lot Size = 137 094 Sq ft.
- Proposed 208 Stalls including 8 Disabled Stalls

Notes:

- Stall sizing is 5.9 x 3.05m
- Main Drive Isle is 9.3m wide
- Parking Isle is 6.7m wide.

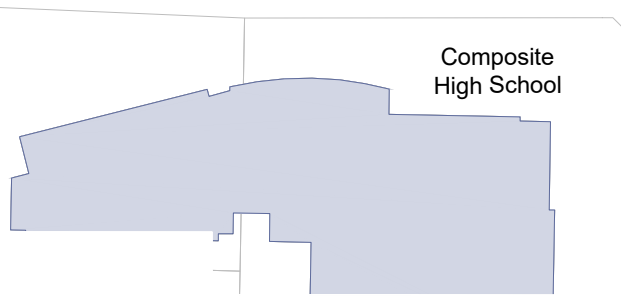
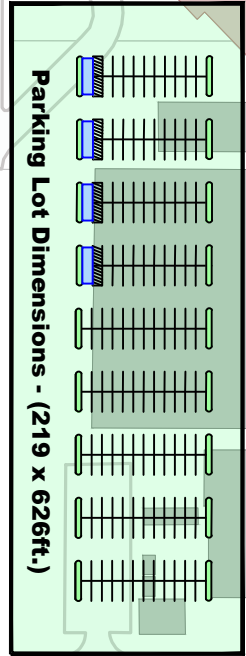
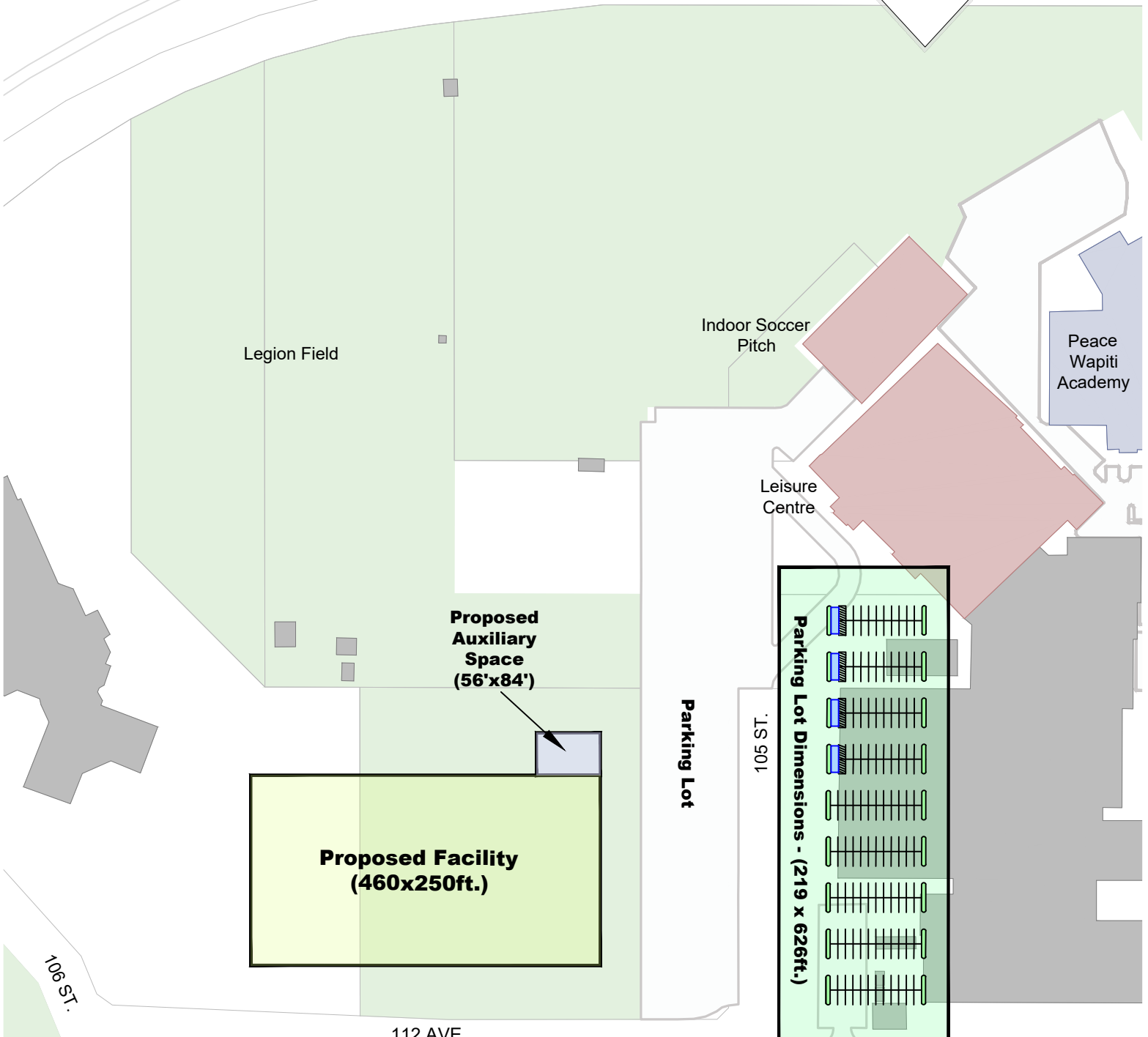
The revision date shown applies only to content of this map as indicated by the site.

This map was prepared by the
GIS & ITS Department,
City of Grande Prairie, Alberta.
Contact the GIS & ITS Department at:
gggis@cityofgp.com
<https://map.gpgis.com>

Scale: N.T.S.
Date: 23/09/05
File No.: C23112



Proposed Recreation Facility Avondale Option 3



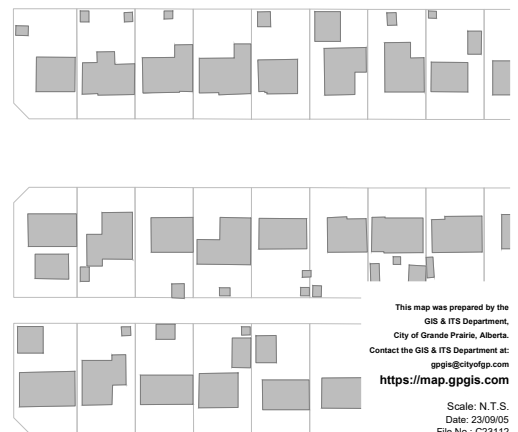
Site Information

- Building Size = 115 000 Sq ft.
- Auxiliary Building Size = 4704 Sq ft.
- Parking Lot Size = 137 094 Sq ft.
- Proposed 208 Stalls including 8 Disabled Stalls

Notes:

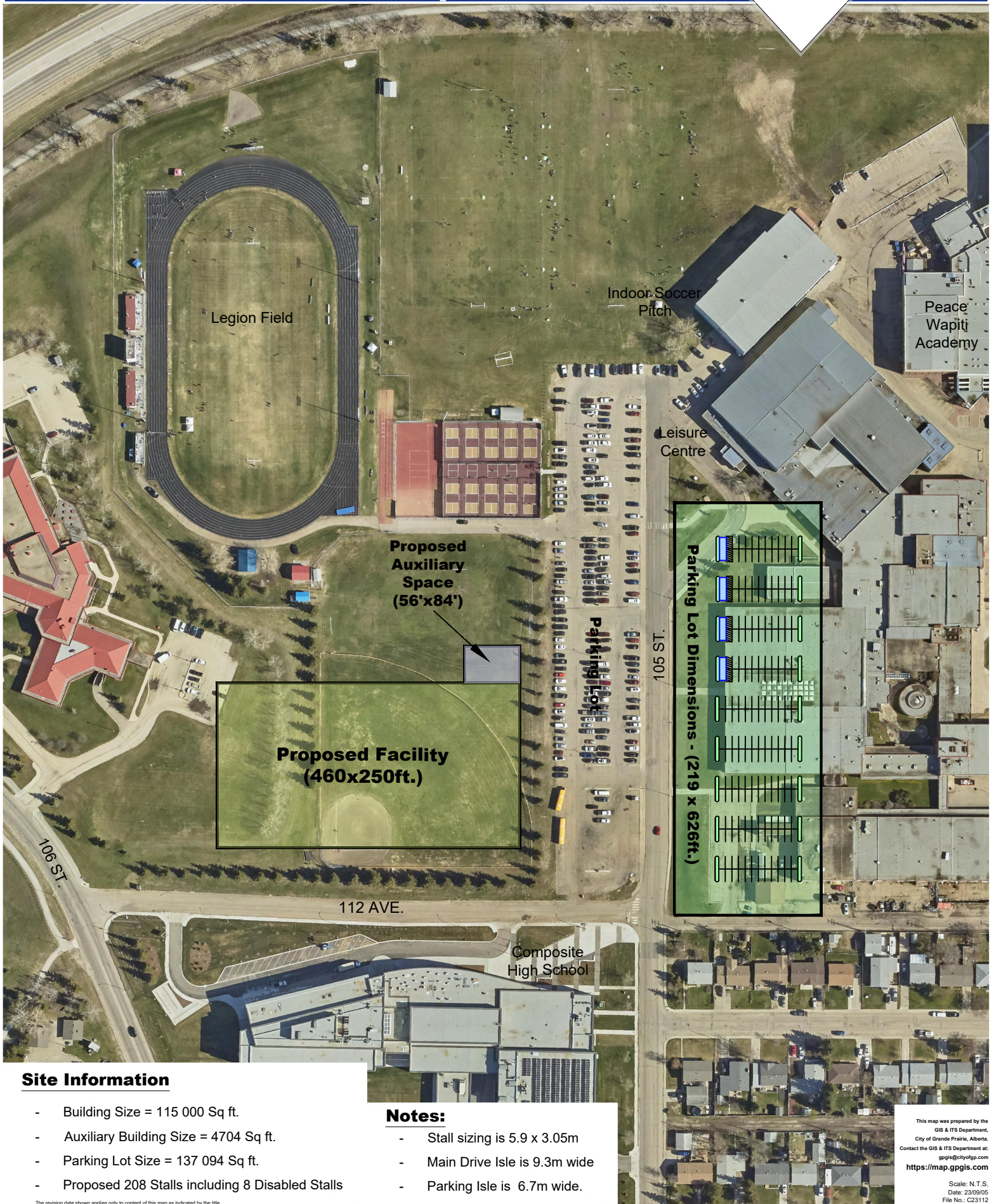
- Stall sizing is 5.9 x 3.05m
- Main Drive Isle is 9.3m wide
- Parking Isle is 6.7m wide.

The revision date shown applies only to content of this map as indicated by the title.





Proposed Recreation Facility Avondale Option 3



Site Information

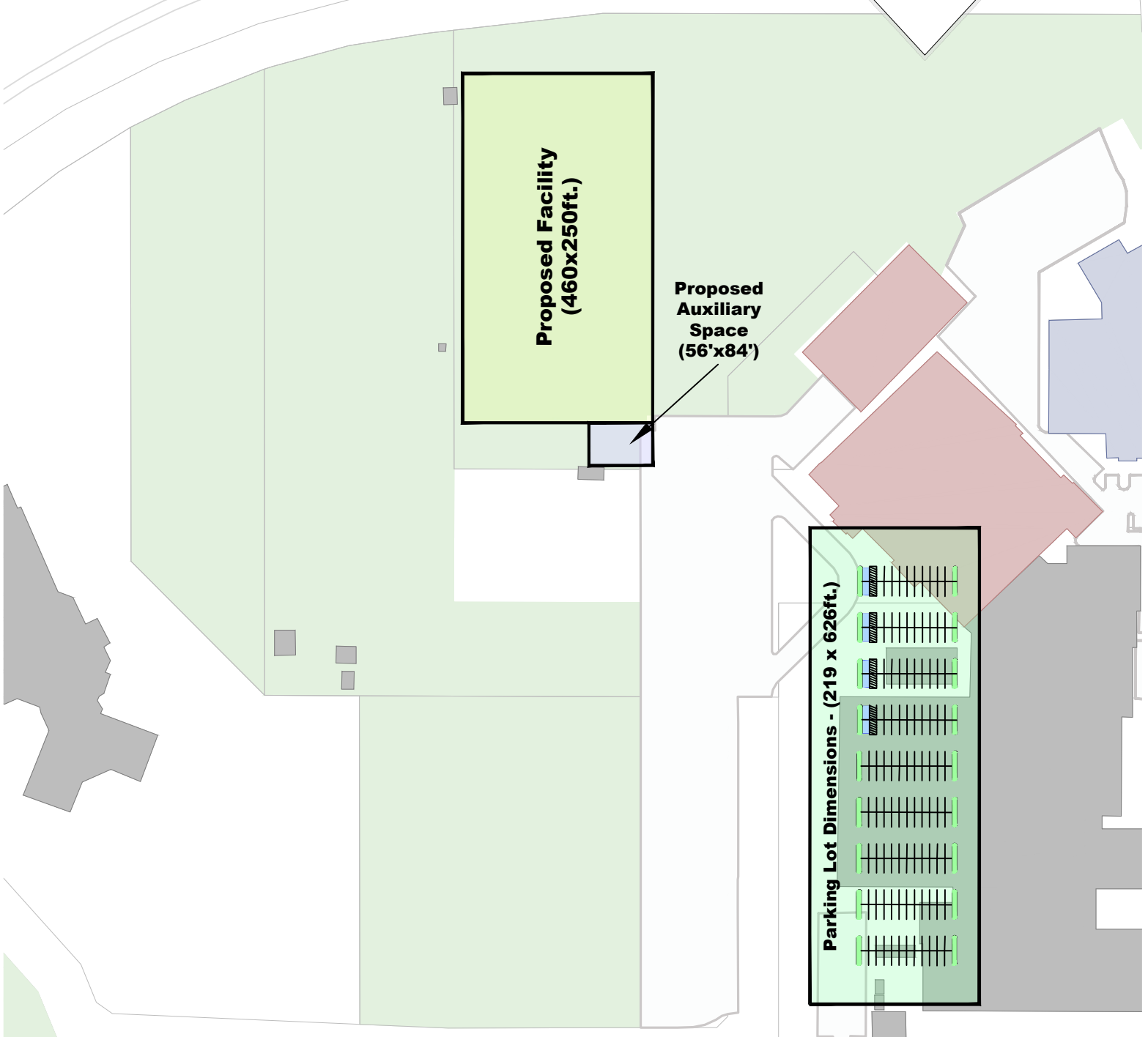
- Building Size = 115 000 Sq ft.
- Auxiliary Building Size = 4704 Sq ft.
- Parking Lot Size = 137 094 Sq ft.
- Proposed 208 Stalls including 8 Disabled Stalls

Notes:

- Stall sizing is 5.9 x 3.05m
- Main Drive Isle is 9.3m wide
- Parking Isle is 6.7m wide.



Proposed Recreation Facility Avondale Option 4



Site Information

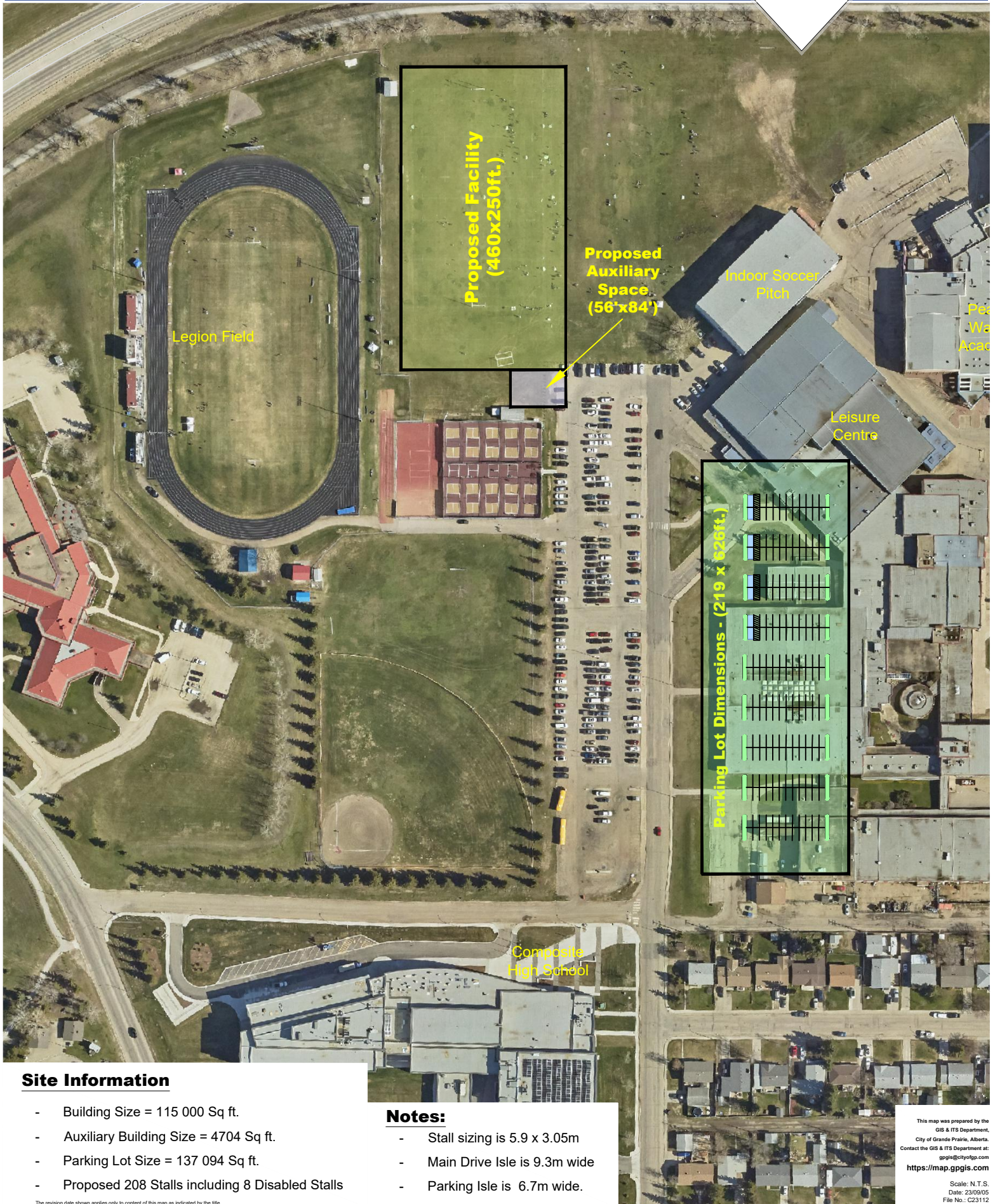
- Building Size = 115 000 Sq ft.
- Auxiliary Building Size = 4704 Sq ft.
- Parking Lot Size = 137 094 Sq ft.
- Proposed 208 Stalls including 8 Disabled Stalls

Notes:

- Stall sizing is 5.9 x 3.05m
- Main Drive Isle is 9.3m wide
- Parking Isle is 6.7m wide.



Proposed Recreation Facility Avondale Option 4



Site Information

- Building Size = 115 000 Sq ft.
- Auxiliary Building Size = 4704 Sq ft.
- Parking Lot Size = 137 094 Sq ft.
- Proposed 208 Stalls including 8 Disabled Stalls

Notes:

- Stall sizing is 5.9 x 3.05m
- Main Drive Isle is 9.3m wide
- Parking Isle is 6.7m wide.

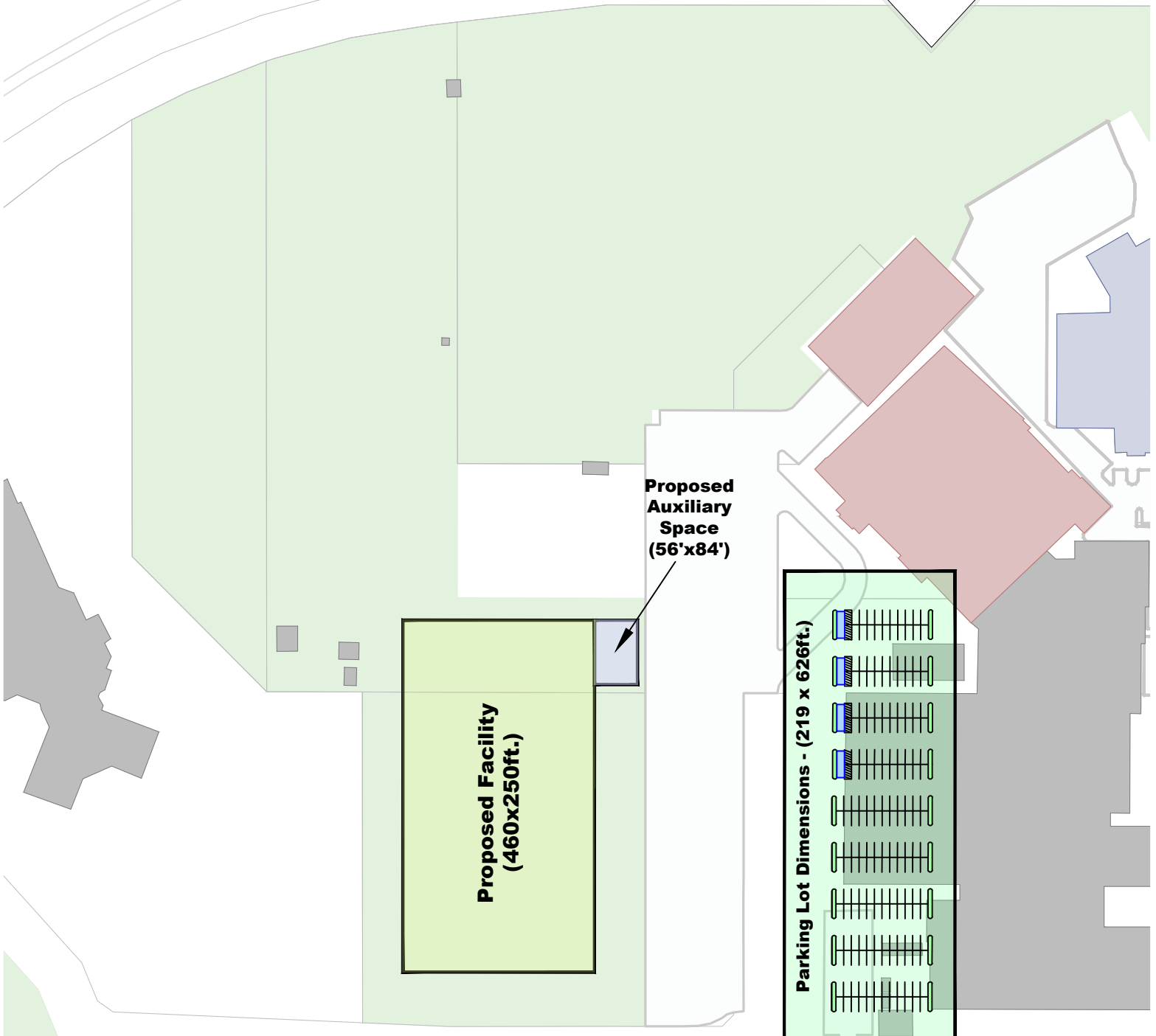
The revision date shown applies only to content of this map as indicated by the site.

This map was prepared by the
GIS & ITS Department,
City of Grande Prairie, Alberta.
Contact the GIS & ITS Department at:
gpgis@cityofgp.com
<https://map.gpgis.com>

Scale: N.T.S.
Date: 23/09/05
File No.: C23112



Proposed Recreation Facility Avondale Option 5



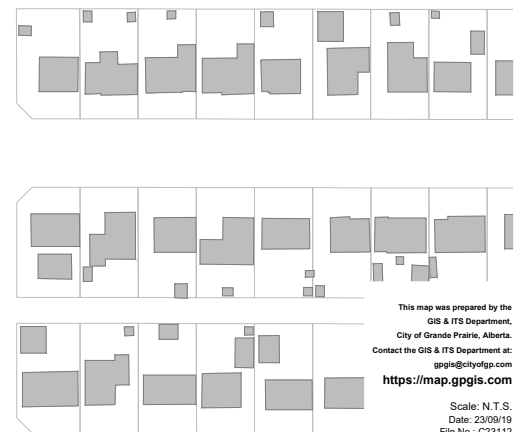
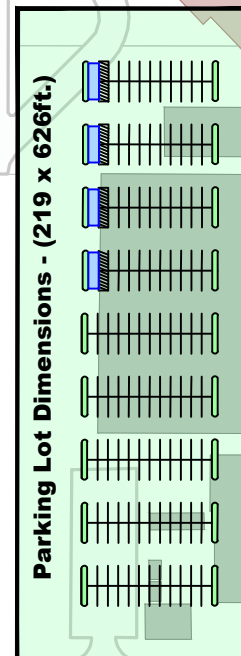
Site Information

- Building Size = 115 000 Sq ft.
- Auxiliary Building Size = 4704 Sq ft.
- Parking Lot Size = 137 094 Sq ft.
- Proposed 208 Stalls including 8 Disabled Stalls

Notes:

- Stall sizing is 5.9 x 3.05m
- Main Drive Isle is 9.3m wide
- Parking Isle is 6.7m wide.

The revision date shown applies only to content of this map as indicated by the title.

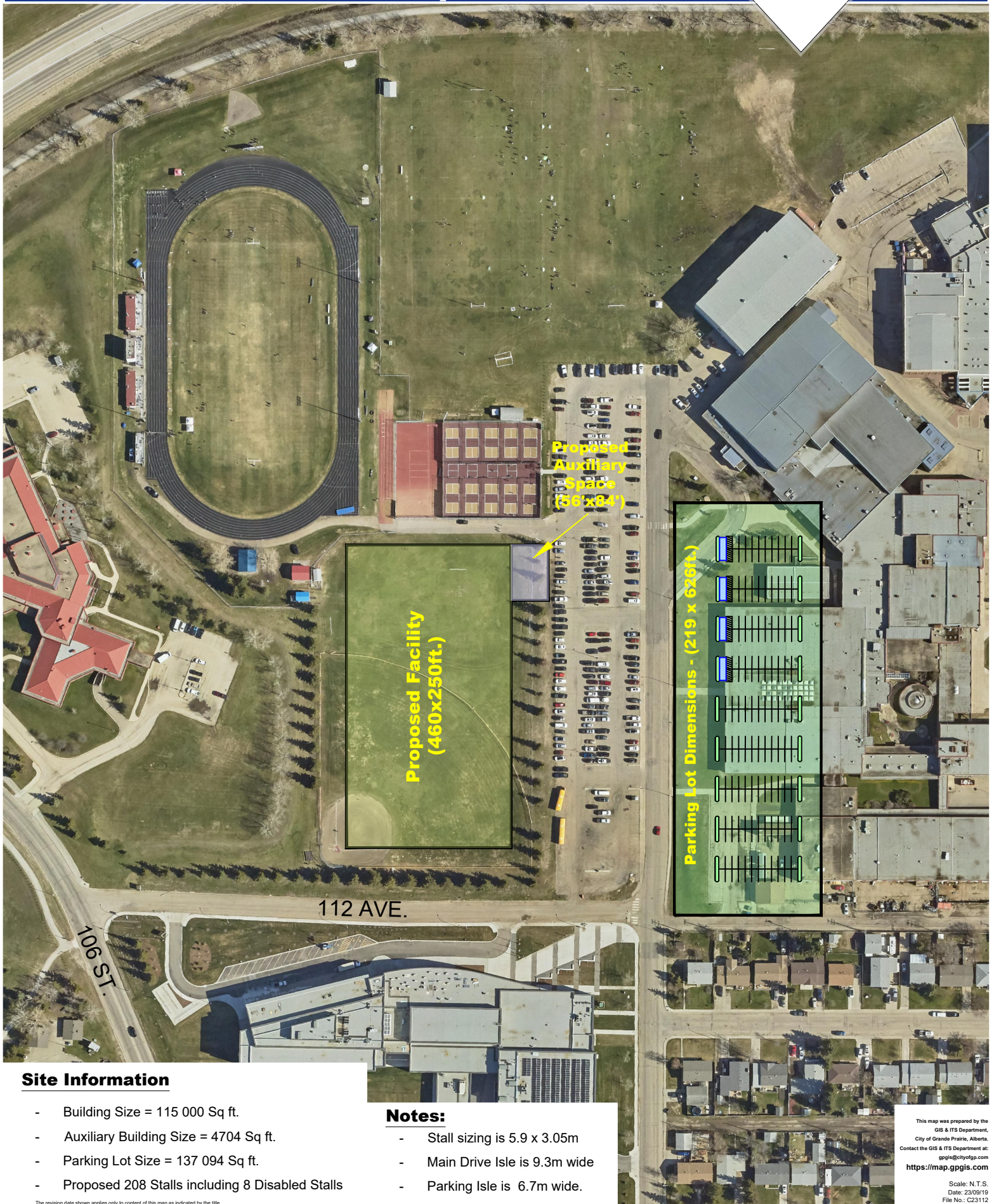


This map was prepared by the
GIS & ITS Department,
City of Grande Prairie, Alberta.
Contact the GIS & ITS Department at:
gpgis@cityofgp.com
<https://map.gpgis.com>

Scale: N.T.S.
Date: 23/09/19
File No.: C23112



Proposed Recreation Facility Avondale Option 5



Site Information

- Building Size = 115 000 Sq ft.
- Auxiliary Building Size = 4704 Sq ft.
- Parking Lot Size = 137 094 Sq ft.
- Proposed 208 Stalls including 8 Disabled Stalls

Notes:

- Stall sizing is 5.9 x 3.05m
- Main Drive Isle is 9.3m wide
- Parking Isle is 6.7m wide.

The revision date shown applies only to content of this map as indicated by the title.

This map was prepared by the
GIS & ITS Department,
City of Grande Prairie, Alberta.
Contact the GIS & ITS Department at:
gpgis@cityofgp.com
<https://map.gpgis.com>

Scale: N.T.S.
Date: 23/09/19
File No.: C23112